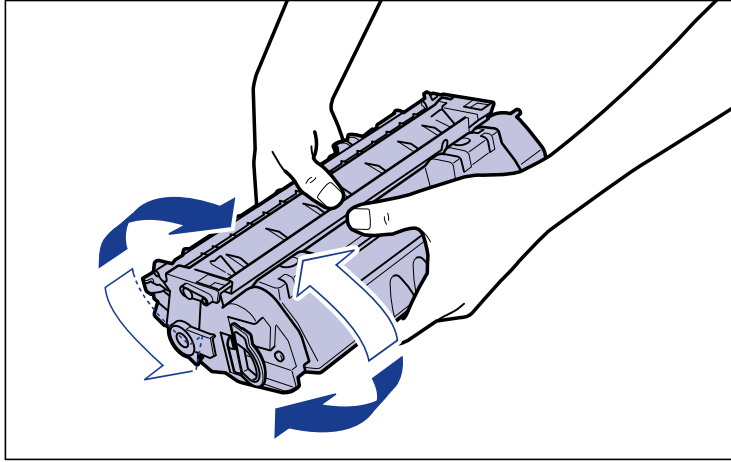


- 5** Hold the toner cartridge as shown in the figure, and shake it gently 5 or 6 times to evenly distribute the toner inside the cartridge.

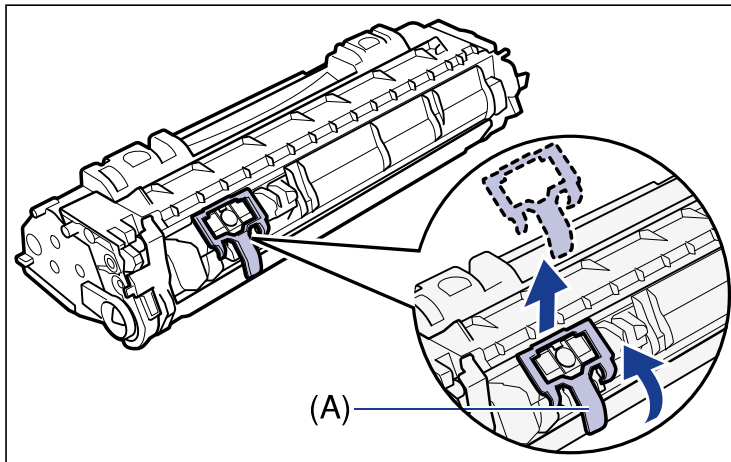


**IMPORTANT**

- If toner is not distributed evenly, this may result in deterioration in print quality. Be sure to carry out this procedure properly.
- Be sure to shake the toner cartridge gently. If you do not shake the cartridge gently, toner may spill out.

- 6** Remove the packing material shown in the figure.

Raise the tab of the packing material (A), then remove it.

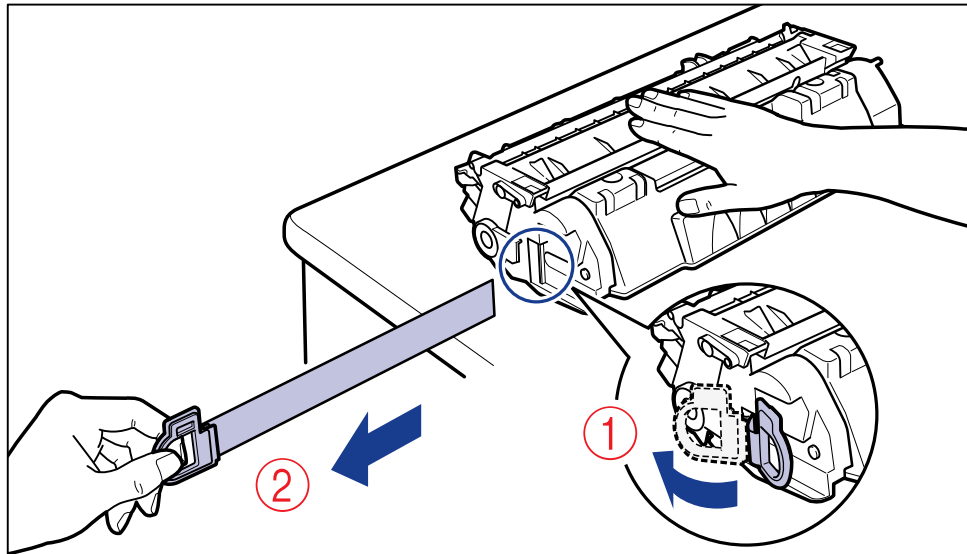


## 7 Place the toner cartridge on a flat surface.

## 8 Pull out the sealing tape.

While holding the toner cartridge steady ①, hook your fingers into the tab and fold it back.

Pull out the sealing tape (approx. 45 cm long) straight in the direction of the arrow gently ②.



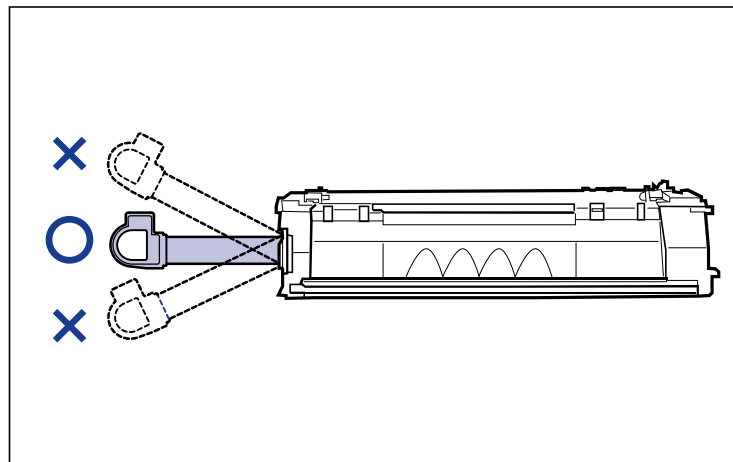
### CAUTION

If the sealing tape is pulled out forcefully or stopped at midpoint, toner may spill out. If the toner gets into your eyes or mouth, wash them immediately with cold water and immediately consult a physician.

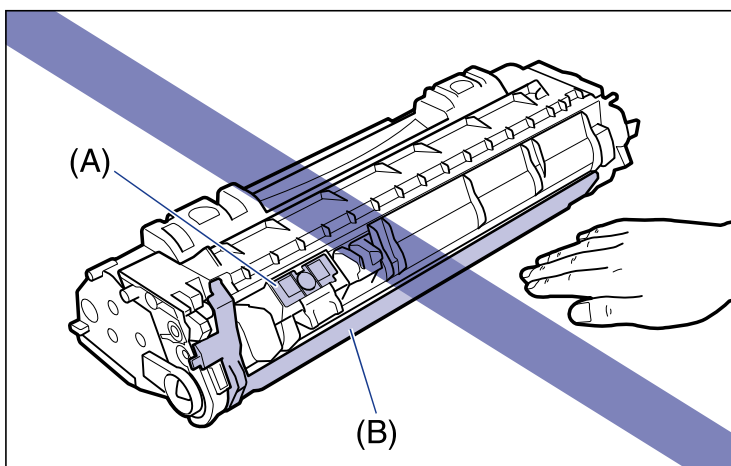


### IMPORTANT

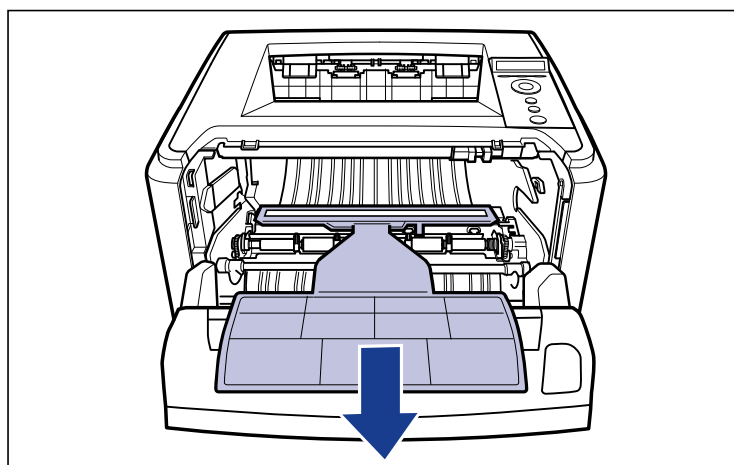
- Do not pull the sealing tape diagonally, upwards, or downwards. If the tape is severed, it may become difficult to pull out completely.



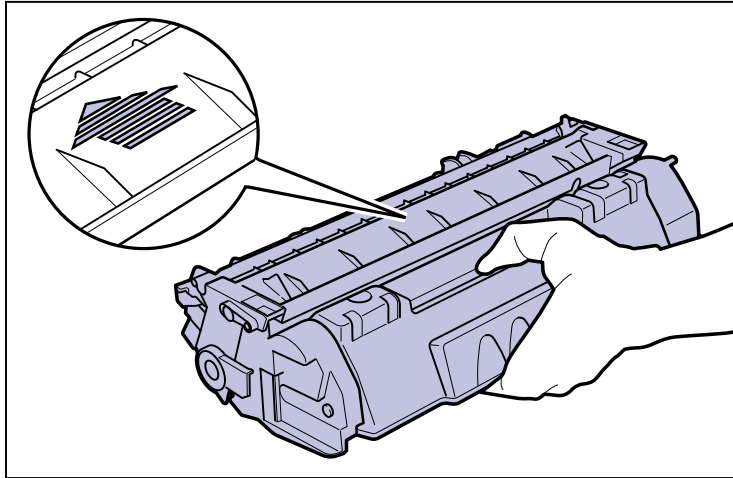
- Pull out the sealing tape completely from the toner cartridge. If any tape remains in the toner cartridge, this may result in poor print quality.
- When pulling out the sealing tape, be careful not to touch the toner cartridge memory (A) or hold the drum protective shutter (B) with your hands.



**9** Remove the packing material with paper inside the front cover.

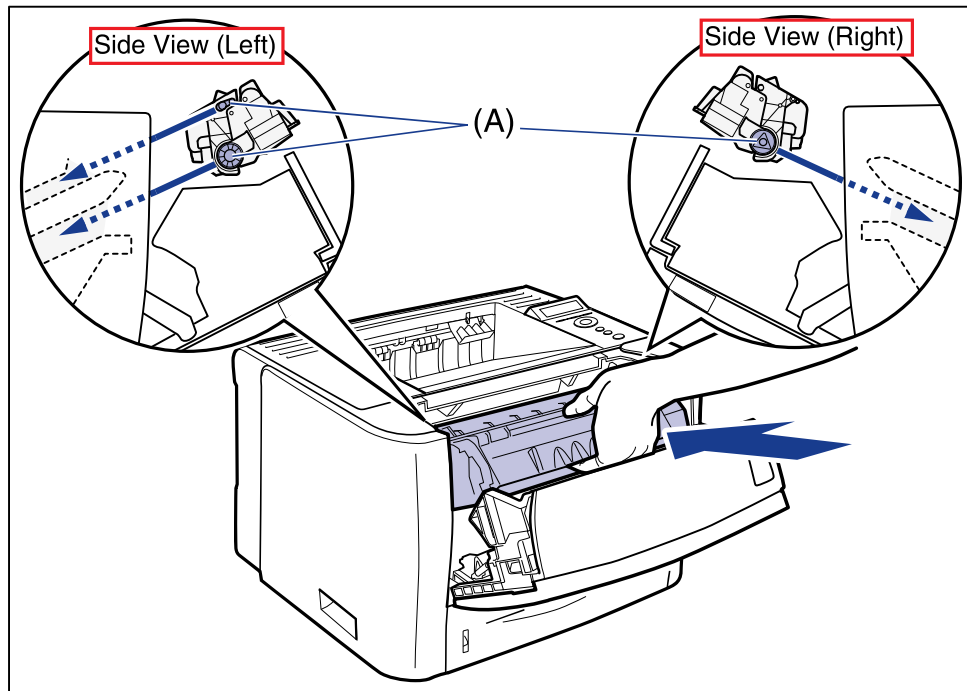


- 10** Hold the toner cartridge properly with the arrowed side facing up as shown in the figure.



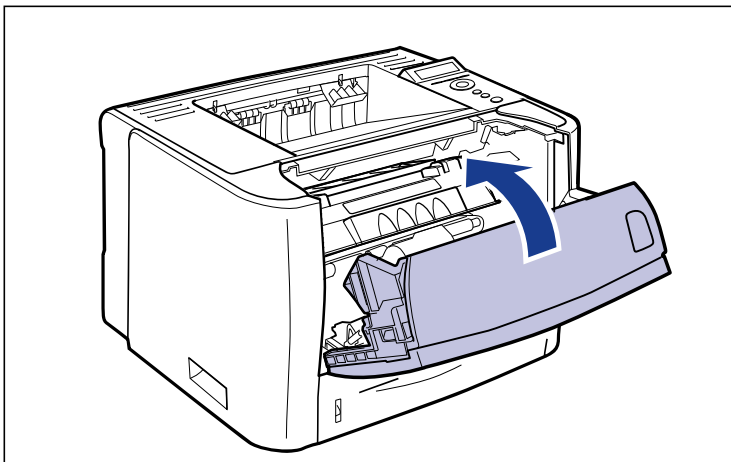
- 11** Install the toner cartridge.

Push the toner cartridge into the printer firmly until it touches the back of the printer while aligning (A) on both sides of the toner cartridge with the toner cartridge guides inside the printer.



## 12 Close the front cover.

Close the front cover gently and firmly.



### IMPORTANT

- If you cannot close the front cover, make sure that the toner cartridge is installed properly. If you try to close the front cover forcefully, this may result in damage to the printer or toner cartridge.
- Do not leave the front cover open for a long time after installing the toner cartridge. This may result in deterioration in print quality.