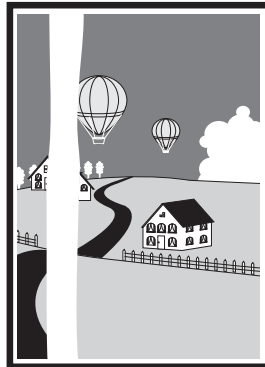


## When to replace the Cartridge

The cartridge is a consumable item and should be replaced when the toner runs out. The following guidelines will help you to determine when to replace the cartridge.

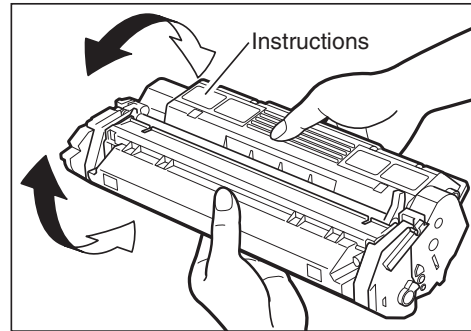
If white streaks or light bands are displayed on copies, the toner in the cartridge is running low.



Paper feeding  
direction



Remove the cartridge from the machine. Always hold the cartridge as shown so that the side with the written instructions faces upward. Do not forcefully move or push the protective shutter of the drum in any way. Rock the cartridge five or six times to distribute the toner evenly. Re-install the cartridge in the machine. Then, make a few test copies.



If the copies appear normal

You can use the cartridge, however, a new one will be needed soon.

If white streaks or light bands are still present

Replace the cartridge with a new one. (→ p. 7-6)

## ■ Copy Yield

This section describes the approximate number of copies that can be made per cartridge.

### Approximate Copy Yield

Canon Cartridge T : Approx. 3500 copies (A4 at 5% dot coverage\*).

\* The term “A4 at 5% dot coverage” denotes an original on which the area covered with black ink is 5% of the total area of an A4-size sheet.

- The actual number of copies that can be made per cartridge depends in part on the copy exposure setting, room temperature and humidity.
- If you copy a large number of originals which contain heavy print or many photographs, toner consumption will increase, and white streaks will appear on copies sooner than indicated above. Toner consumption will also increase if you copy with the ADF left open.
- Small-sized originals and originals with less print will use less toner. However, although you may be able to use the cartridge longer than indicated above, dark bands might appear on copies.

## ■ Handling and Storing the Cartridge

This section describes the precautions to ensure optimum copy quality.

### Handling Precautions



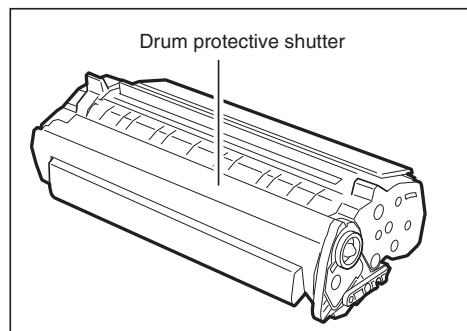
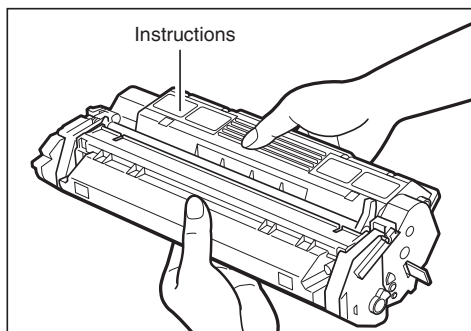
- Do not throw cartridge into open flames, as this may cause the toner to ignite and result in burns or a fire.
- The cartridge emits low level magnetic flux. If you use a cardiac pacemaker and feel abnormalities, please move away from the cartridge, and consult your doctor.



- Never attempt to disassemble the cartridge or open the protective shutter of the drum.



- If the machine is brought from the cold outdoors into a warm room, or if the room is rapidly heated, condensation may form inside the machine.  
This can adversely effect the quality of your copy images (e.g., copies are completely black).  
When the machine is exposed to such conditions, allow at least two hours for the machine to adjust to room temperature before attempting to use it.
- Always hold the cartridge as shown so that the side with the instructions faces upward. Do not forcefully move or push the protective shutter of the drum in any way.



## Storage Precautions



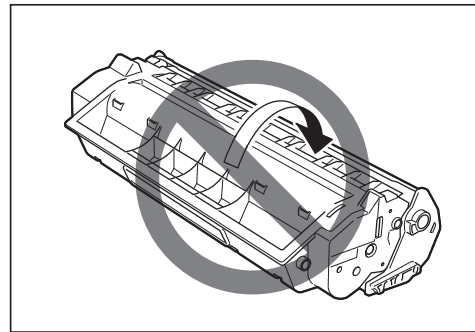
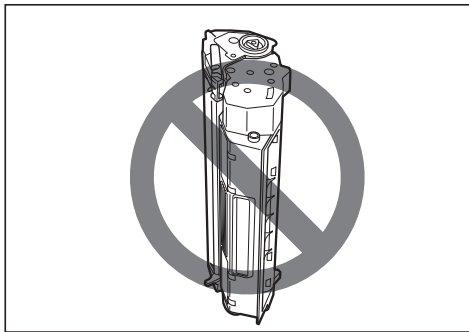
- Do not store cartridges or copy paper in places exposed to open flames, as this may cause the toner or copy paper to ignite and resulting in burns or a fire.



- Keep cartridges and other consumables out of the reach of children. If the contents of these items are ingested, consult a physician immediately.



- Place the cartridge in its protective bag so that the side with the written instructions is facing upward. Then, place the bagged cartridge into its shipping box. Store the unused cartridge out of direct sunlight.
- For partially used/opened cartridges, place the cartridge in its protective bag so that the side with the written instructions is facing upward. Then place the bagged cartridge into its shipping box and store it away from direct sunlight.
- Avoid storing the cartridge in front of heaters and humidifiers, etc. Store it in a location where the temperature does not exceed 40°C.
- The recommended storage conditions are as follows:  
Temperature 15°C to 27°C  
Relative Humidity 20% to 80%.
- Do not stand the cartridge on end or turn it upside down.



## Storing Partially Used Cartridges

If you remove a cartridge from the machine, store the cartridge as described below.

Place the cartridge in its protective bag so that the side with the written instructions is facing upward. Then, place the cartridge into its shipping box. Be sure to securely close the lid of the shipping box.

If you do not have the protective bag or shipping box for the cartridge, store the cartridge in a dark location.

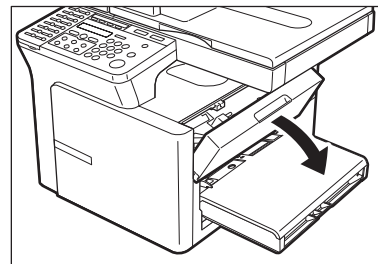
## Recycling Used Cartridges

In order to make effective use of the earth's natural resources and protect the environment, we urge you to recycle used cartridges. Do our part by returning used cartridges to the place of purchase.

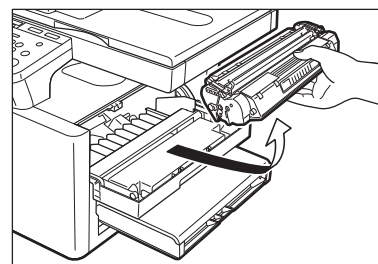
# Replacing the Cartridge

This section describes how to remove the used cartridge and replace it with a new one. Before replacing the cartridge, be sure to read the section “When to Replace the Cartridge”. (→ p. 7-3)

- 1 Open the right cover.



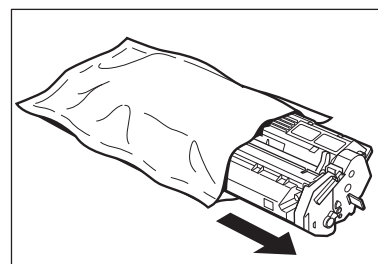
- 2 Remove the cartridge from the machine.



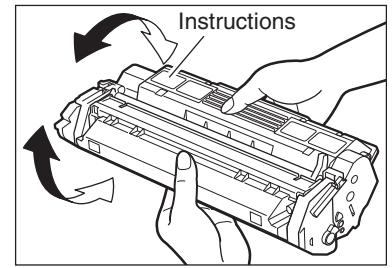
- 3 Remove the new cartridge from its protective bag.



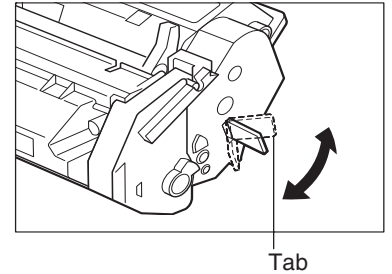
- Save the protective bag. You may need it later when you remove the cartridge from the machine.



**4** Rock the cartridge five or six times to distribute the toner evenly.



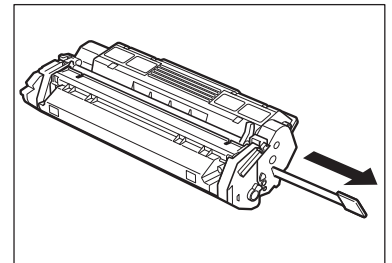
**5** Place the cartridge on a flat and stable surface. Grip the sealing tape tab and snap it in the direction as shown below. Make sure that the tab itself is detached from the cartridge.



**6** While grasping the cartridge with one hand, firmly and slowly pull the sealing tape tab with the other hand to remove the sealing tape completely. Throw the tape away.



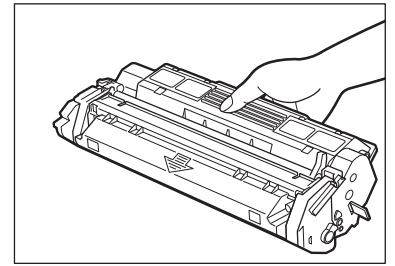
- To avoid breaking the tape, do not pull the tape out at an upward or downward angle.



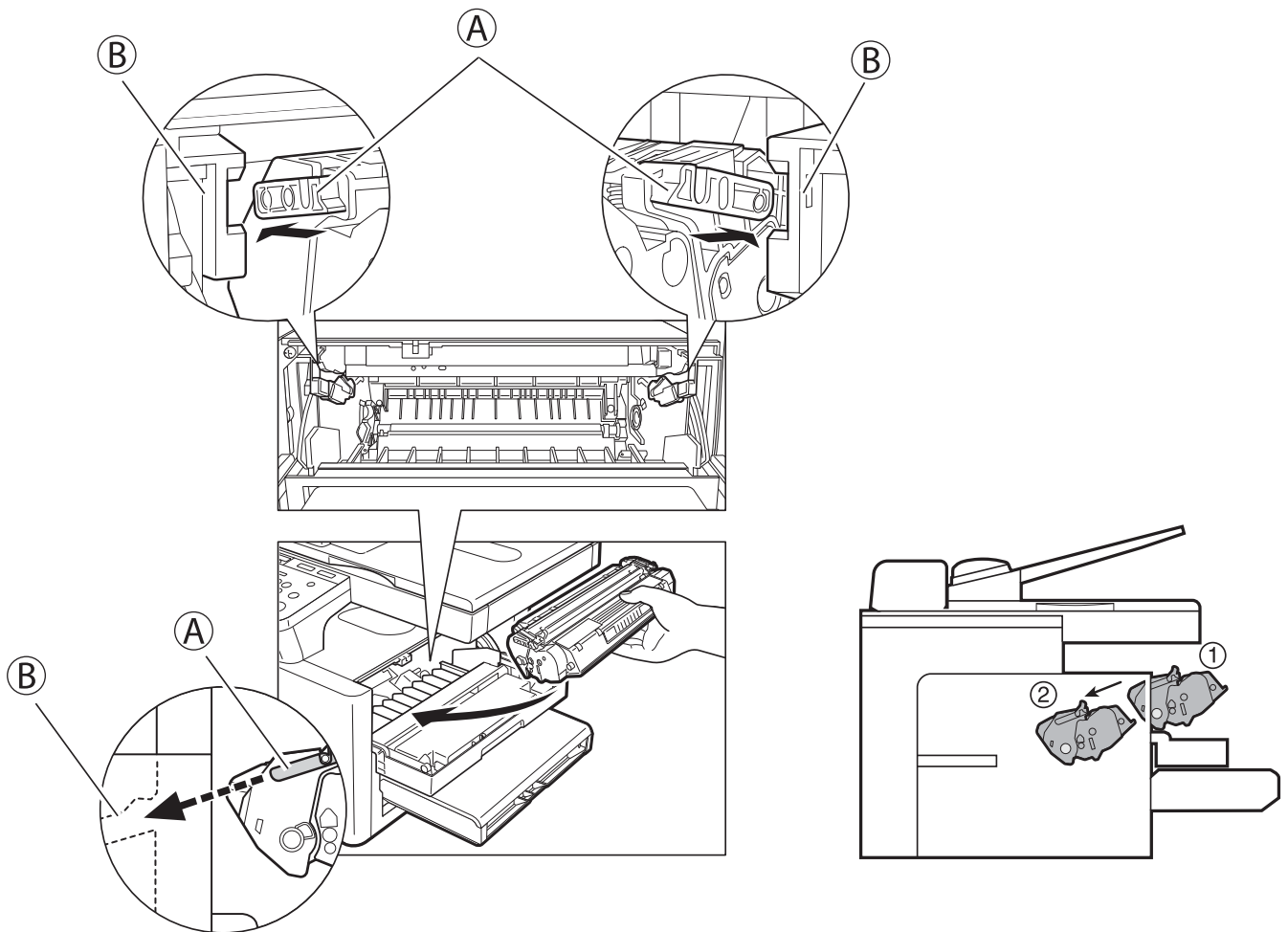
**7**

Maintenance

- 7** Hold the cartridge and position the arrow mark on the cartridge towards the inside of the machine shown below.

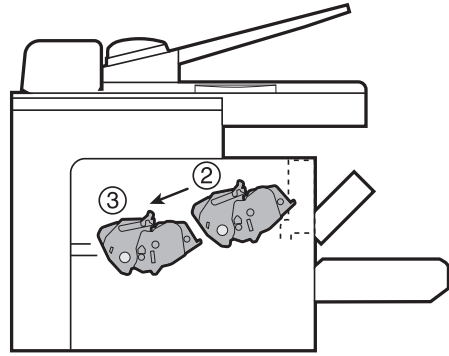
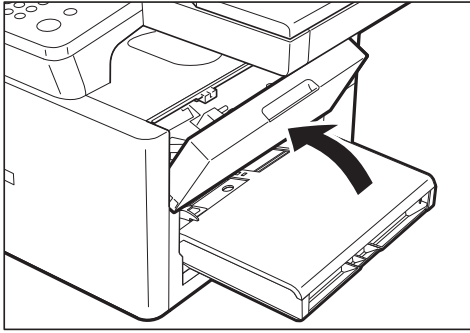


- 8** Align the projections (A) on both sides of the cartridge to the guides (B) in the machine (location ①) and gently slide the cartridge into the machine until the right cover slightly rises up (location ②).



- The right cover moves simultaneously with the action of the cartridge. Do not push the cartridge farther than the location ②. Doing so will result in catching your hand in the right cover.

- 9** Close the right cover and the cartridge will be set in place (location ③).



- If the LCD displays **INSTALL CARTRIDGE**, reset the machine by opening the right cover and then closing it.