

PARTS	AVERAGE YIELD ^a	PART NAME
Document feeder rubber pad	Approx. 10,000 pages	RMO ADF RUBBER
White roller	Approx. 50,000 pages	ROLLER-WHITE
Fuser unit	Approx. 50,000 pages	FUSER
Pickup roller	Approx. 50,000 pages	ROLLER-PICK UP
Cassette pad unit	Approx. 50,000 pages	CASSETTE

a. It will be affected by media type, media size and job complexity.

To purchase maintenance parts, contact the source where you bought the machine.

Replacing maintenance parts can be performed only by an authorized service provider, dealer, or the retailer where you bought the machine. The warranty does not cover the replacement of any maintenance parts after their lifespan.

Replacing the toner cartridge



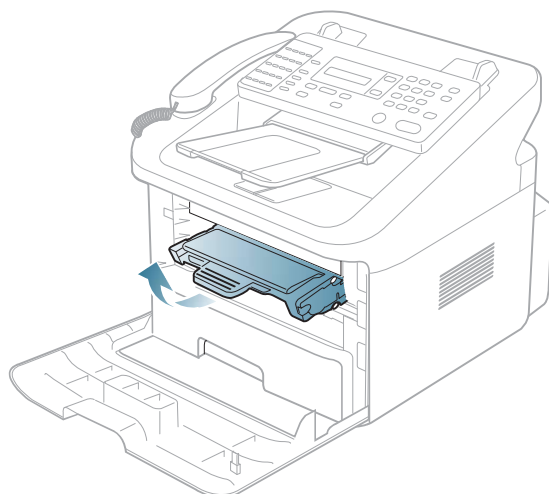
Click this link to open an animation about replacing a toner cartridge.

When a toner cartridge has reached its estimated cartridge life:

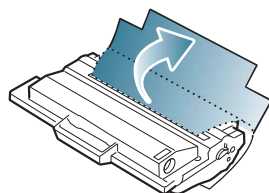
- **End of life Replace new cart** appears on the display.
- The machine stops printing. Incoming faxes are saved in memory.

At this stage, the toner cartridge needs to be replaced. Check the type of the toner cartridge for your machine (See "Available supplies" on page 67).

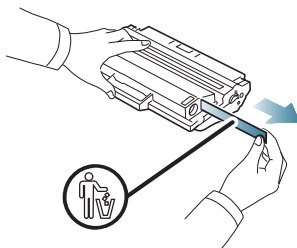
1. Open the front door.
2. Pull the toner cartridge out.



3. Remove the new toner cartridge out of its package.
4. Remove the paper protecting the toner cartridge by pulling the packing tape.

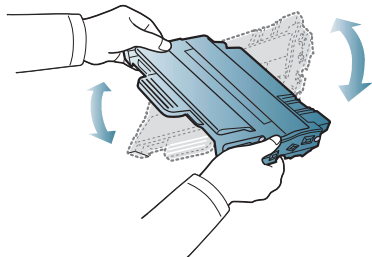


5. Locate the sealing tape at the end of the toner cartridge. Carefully pull the tape completely out of the cartridge and discard it.



- The sealing tape should be longer than 60 cm when correctly removed.
- Holding the toner cartridge, pull the sealing tape straight to remove it from the cartridge. Be careful not to cut the tape. If this happens, you cannot use the toner cartridge.
- Refer to the helpful pictures on the cartridge wrapping paper.

6. Slowly shake the cartridge five or six times to distribute the toner evenly inside the cartridge. It will assure maximum copies per cartridge.

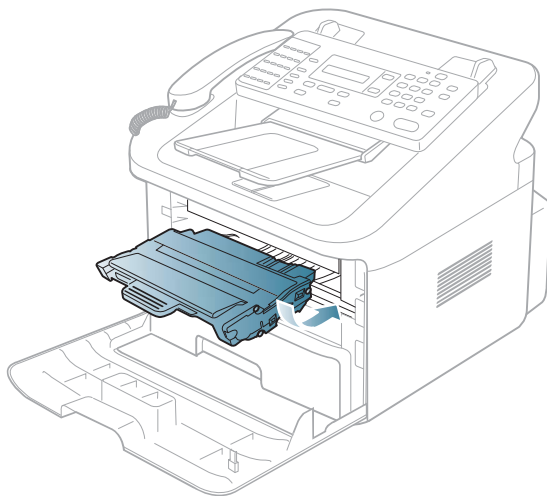


If toner gets on your clothing, wipe it off with a dry cloth and wash clothing in cold water. Hot water sets toner into fabric.



Do not touch the green underside of the toner cartridge. Use the handle on the cartridge to avoid touching this area.

7. Hold the toner cartridge by the handle and slowly insert the cartridge into the opening in the machine. Tabs on the sides of the cartridge and corresponding grooves within the machine will guide the cartridge into the correct position until it locks into place completely.



8. Close the front door. Make sure that the cover is securely closed.