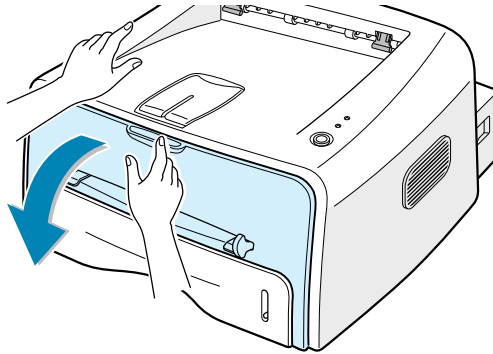


---

## Installing the Toner Cartridge

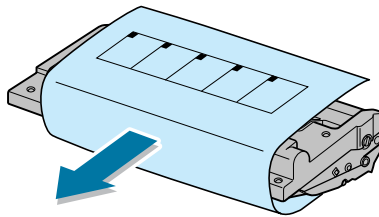
- 1 Grasp the front cover and pull it toward you to open.



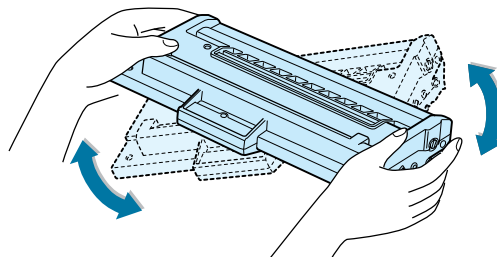
**Note:** Because the printer is very light, it may be moved when you use it; for example, when opening/closing the tray or installing/removing the toner cartridge. Be careful not to move the printer.

---

- 2 Remove the toner cartridge from its bag and remove the paper covering the cartridge.



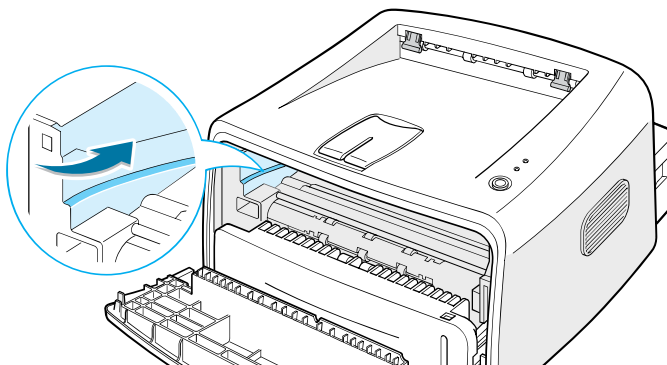
- 3 Gently shake the cartridge from side to side to distribute the toner evenly inside the cartridge.



### CAUTION:

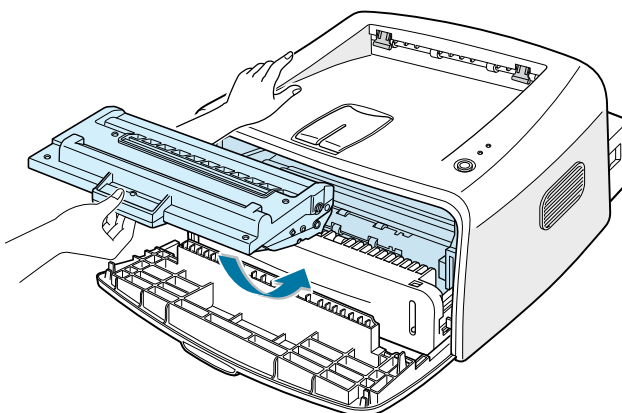
- To prevent damage, do not expose the toner cartridge to light for more than a few minutes. Cover it with a piece of paper, if left exposed for more than a few minutes.
  - If toner gets on your clothing, wipe it off with a dry cloth and wash clothing in cold water. Hot water sets toner into fabric.
-

- 4 Locate the cartridge slots inside the printer, one on each side.

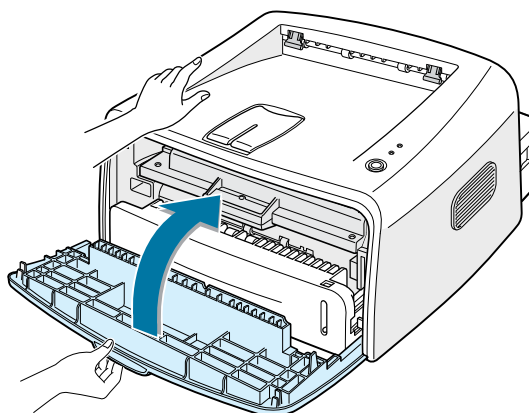


2

- 5 Grasp the handle and insert the cartridge in the printer until it snaps into place.



- 6 Close the front cover. Make sure that the cover is securely closed. If the cover is not firmly closed, printing errors may occur when you print.



**Note:** When printing text at 5% coverage, you can expect a toner cartridge life of approximately 3,000 pages (1,000 pages for the toner cartridge that is shipped with the printer).