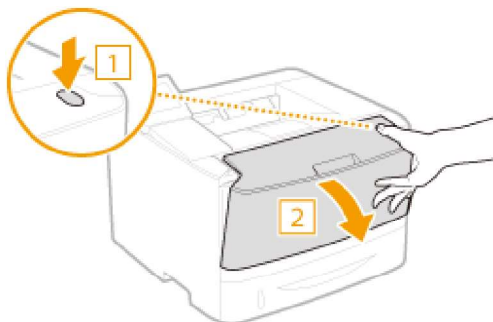


## How to Replace Toner Cartridges

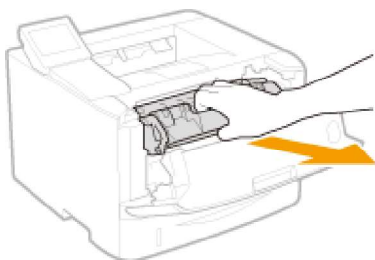
0W20-069

Read the precautions in **Maintenance and Inspections(P. 9)** and **Consumables(P. 10)** before replacing the toner cartridges.

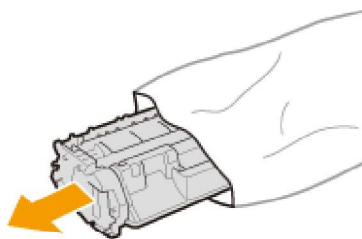
- 1** Open the front cover while holding down on the button.



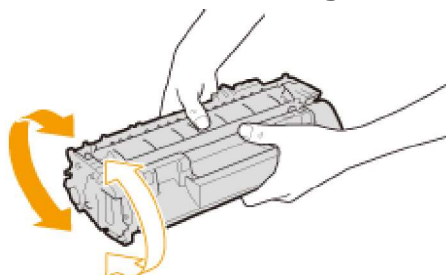
- 2** Remove the toner cartridge.



- 3** Remove the replacement toner cartridge from the protective bag.

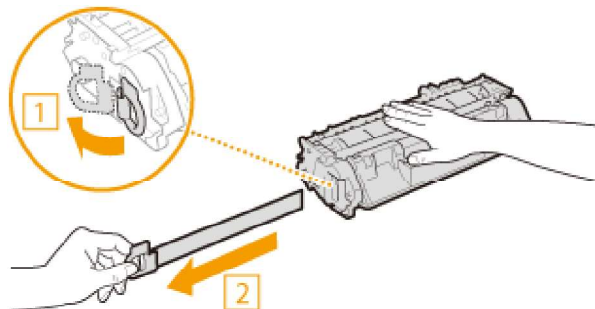


- 4** Shake the toner cartridge five or six times as shown below to evenly distribute the toner inside the cartridge, and then place it on a flat surface.



## 5 Pull the sealing tape straight out.

- The full length of the sealing tape is approximately 50 cm.

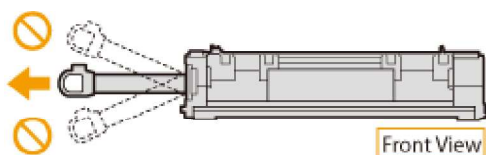


### IMPORTANT:

#### When pulling out the sealing tape

If the sealing tape remains inside the toner cartridge, the quality of printouts may deteriorate.

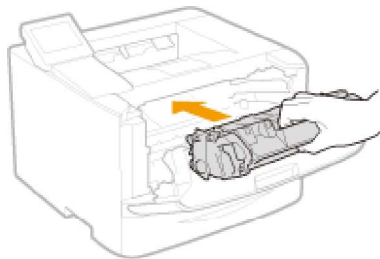
- Do not pull out the sealing tape at an angle or sideways. If the tape breaks, you may not be able to pull it out completely.



- If the sealing tape becomes stuck when pulling it out, keep pulling until it is completely removed.

## 6 Install the toner cartridge.

- Fully push it in until it cannot go any further.



## 7 Close the front cover.