

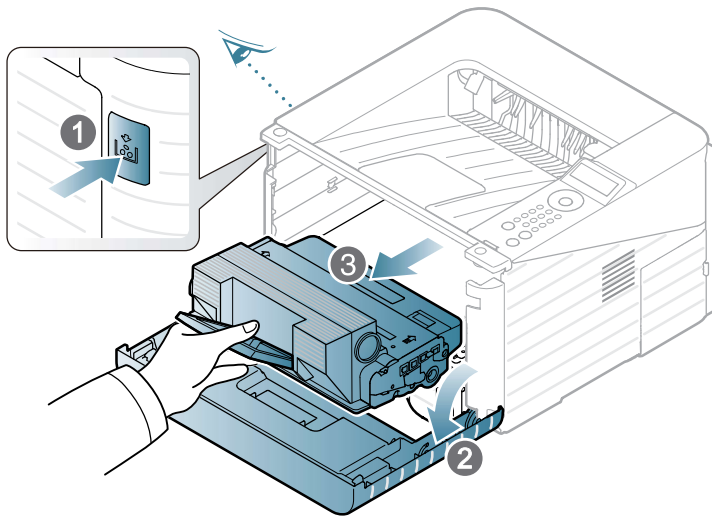
# Replacing the toner cartridge



Click this link to open an animation about replacing a toner cartridge.

When a toner cartridge has reached the end of life, the machine will stop printing.

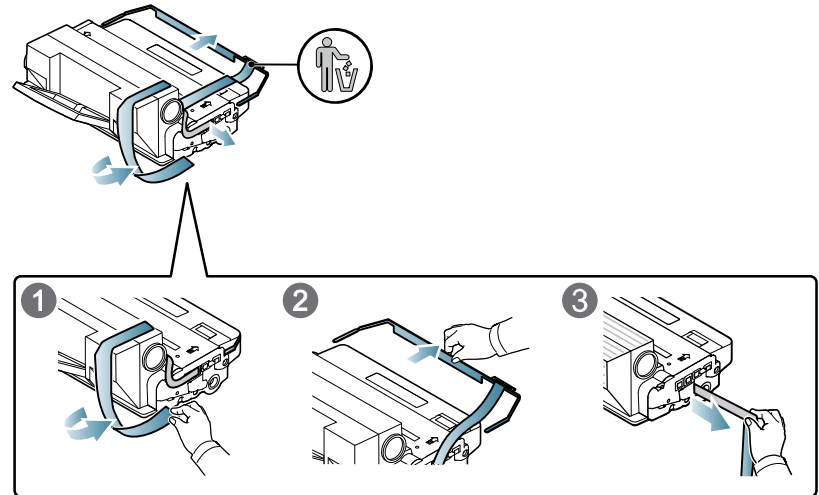
- 1 Open the front cover and pull the toner cartridge out.



- 2 Remove the new toner cartridge from its bag.

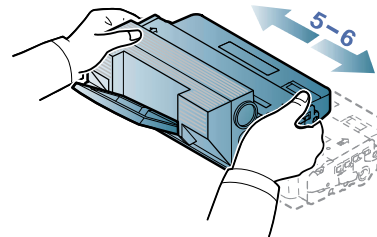
3

Remove the label from the toner cartridge as shown below.



4

Thoroughly shake side to side the cartridge five or six times to distribute the toner evenly inside the cartridge.



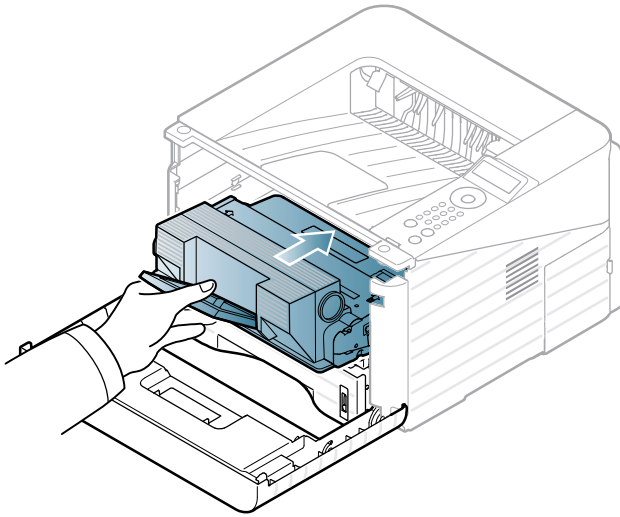
If toner gets on your clothing, wipe it off with a dry cloth and wash clothing in cold water: hot water sets toner into fabric.

# Replacing the toner cartridge



Do not touch the green underside of the toner cartridge. Use the handle on the cartridge to avoid touching this area.

- 5 Hold the toner cartridge by the handle and slowly insert the cartridge into the opening in the machine.



- 6 Close the front cover. Make sure that the cover is securely closed.