

# General Care

## Redistributing Toner

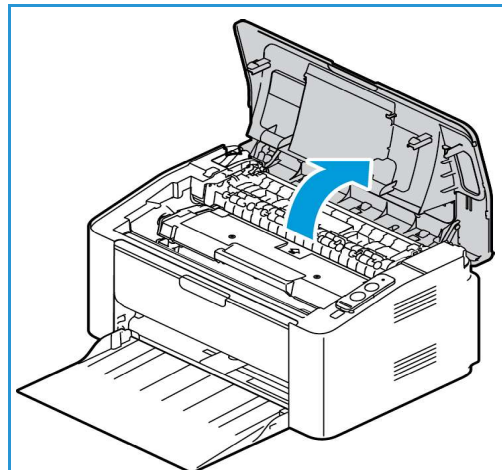
When the print cartridge is near the end of its life:

- White streaks on prints or light printing occurs.
- The orange LED toner light on the control panel is blinking.

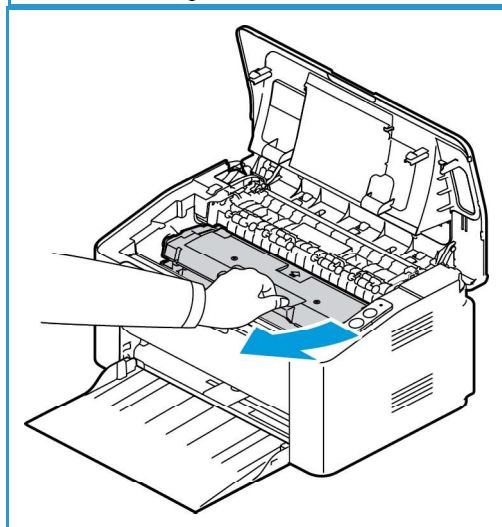
If this happens, you can temporarily improve print quality by redistributing the remaining toner in the cartridge. In some cases, white streaks or light printing will still occur even after you have redistributed the toner.

Follow these steps to redistribute the toner in your print cartridge and thus temporarily improve print quality.

1. Open the top cover.

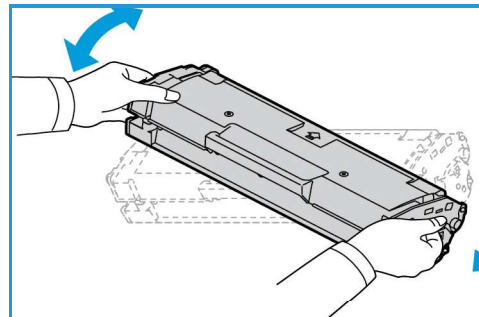


2. Pull the print cartridge out.



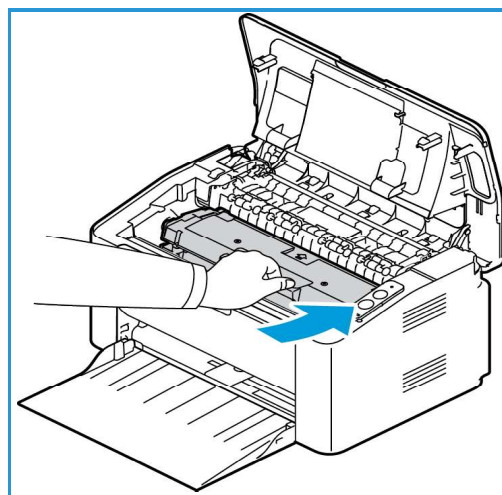
3. Slowly shake the cartridge five or six times to distribute the toner evenly inside the cartridge.

**Note:** If toner gets on your clothing, wipe it off with a dry cloth and wash clothing in cold water. Hot water sets toner into fabric.



4. Re-install the print cartridge by inserting it slowly into the machine.
5. Close the printer cover. The machine status light on the control panel should be green, indicating the machine is ready to print. The toner LED light should be out, indicating that the print cartridge has enough toner to print.

**CAUTION:** Do not touch the green underside of the print cartridge. Use the handle on the cartridge to avoid touching this area.

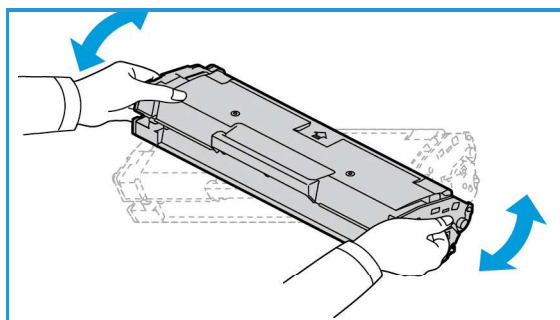


## Replacing the Print Cartridge

When the Toner LED light at the top of the printer control panel is solid orange, it is time to replace the print cartridge.

Replace the print cartridge using the following instructions.

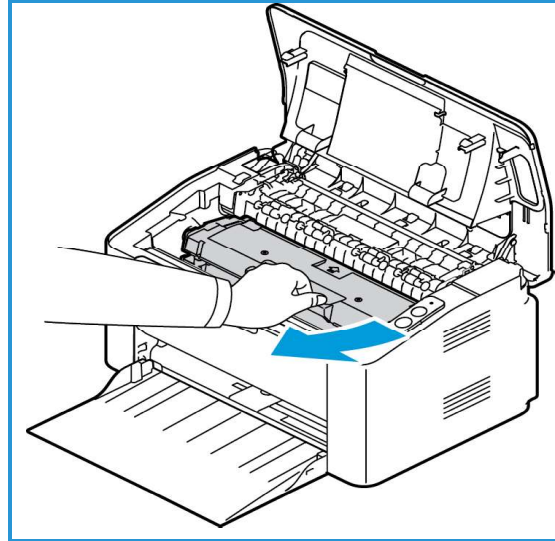
1. Open the top cover.



2. Pull out the print cartridge.

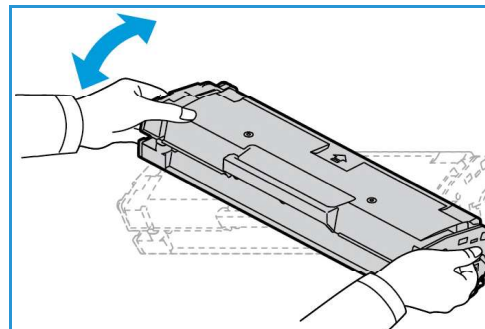
**CAUTION:** Do not touch the green underside of the print cartridge. Use the handle on the cartridge to avoid touching this area.

**WARNING:** When replacing consumables, DO NOT remove machine covers or guards that are fastened with screws. You cannot maintain or service any of the parts that are behind these covers and guards. Do NOT attempt any maintenance procedure that is NOT specifically described in the documentation supplied with your machine.



3. Remove the new print cartridge from the packaging. Read and follow the directions on the packaging to remove the protective materials as directed.
4. Slowly shake the cartridge five or six times to distribute the toner evenly inside the cartridge.

**Note:** If toner gets on your clothing, wipe it off with a dry cloth and wash clothing in cold water. Hot water sets toner into fabric.



5. Hold the new print cartridge by the handle and slowly insert it into the machine. Tabs on the sides of the cartridge and corresponding grooves within the machine will guide the cartridge into the correct position until it locks into place.
6. Close the top cover. The machine status light on the control panel should be green, indicating the machine is ready to print. The toner LED light should be out, indicating that the print cartridge has enough toner to print.

