

# General Care

## Redistributing Toner

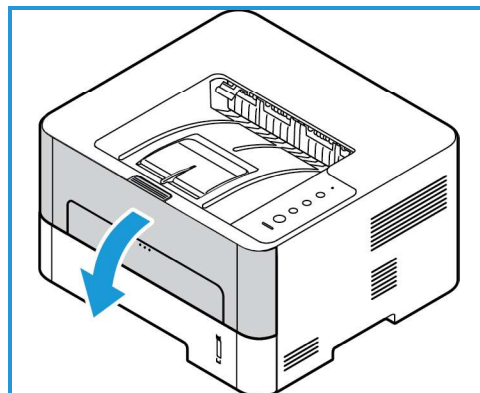
When the toner cartridge is near the end of its life:

- White streaks on prints or light printing occurs.
- The toner LED light at the top of the control panel is blinking orange if the Low Toner Alert feature has been enabled.

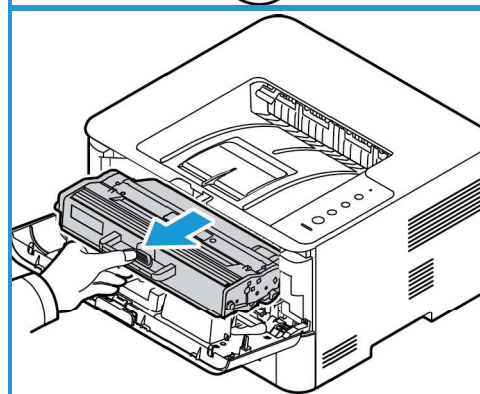
If either of these conditions occurs, you can temporarily improve print quality by redistributing the remaining toner in the cartridge. In some cases, white streaks or light printing will still occur even after you have redistributed the toner.

Follow these steps to redistribute the toner in your cartridge and thus temporarily improve print quality.

1. Open the front cover of the printer.

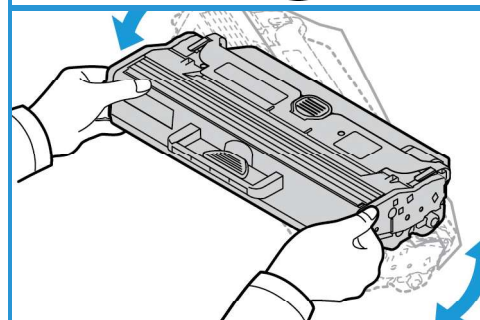


2. Pull out the cartridge using the handle with the colored label.



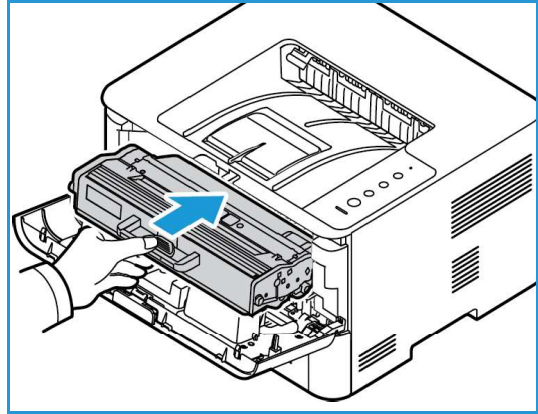
3. Slowly shake the cartridge five or six times to distribute the toner evenly inside the cartridge.

**Note:** If toner gets on your clothing, wipe it off with a dry cloth and wash clothing in cold water. Hot water sets toner into fabric.



## General Care

4. Insert the toner cartridge slowly into the printer, pushing it until it locks into place.
5. Close the front cover of the printer. The Machine Status light should be solid green, indicating the printer is ready to print.

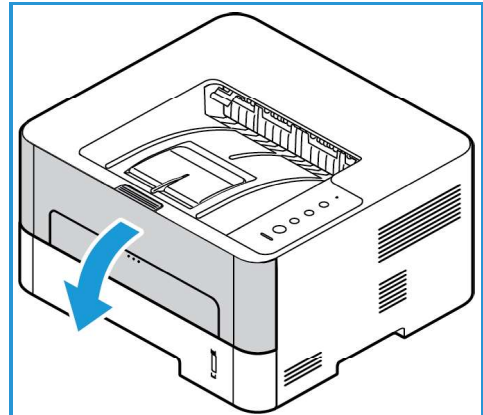


## Replacing the Toner Cartridge

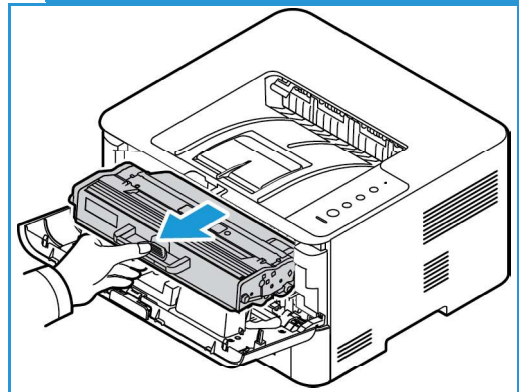
When the Toner LED light on the control panel is solid orange, it is time to replace the toner cartridge. To replace the cartridge, follow the instructions provided below or with the consumable.

**WARNING:** When replacing consumables, DO NOT remove the covers or guards that are fastened with screws. You cannot maintain or service any of the parts that are behind these covers and guards. Do NOT attempt any maintenance procedure that is NOT specifically described in the documentation supplied with your machine.

1. Open the front cover of the printer.

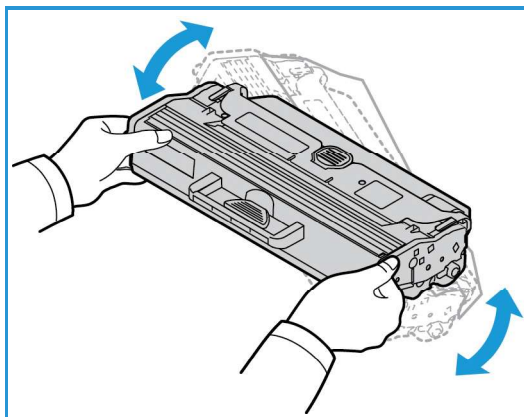


2. Pull the toner cartridge out using the handle.
3. Remove the new toner cartridge from the packaging. Follow the packaging directions to remove the protective packaging materials from the cartridge.

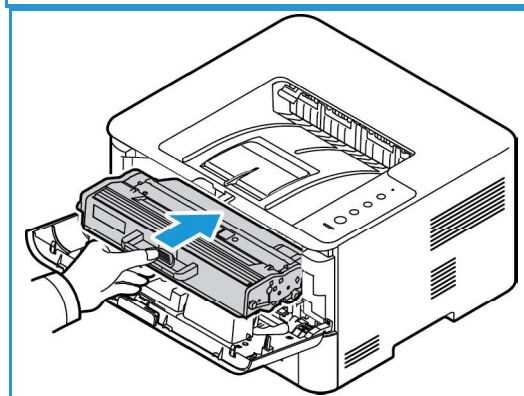


- Slowly shake the new cartridge five or six times to distribute the toner evenly inside the cartridge.

**Note:** If toner gets on your clothing, wipe it off with a dry cloth and wash clothing in cold water. Hot water sets toner into fabric.



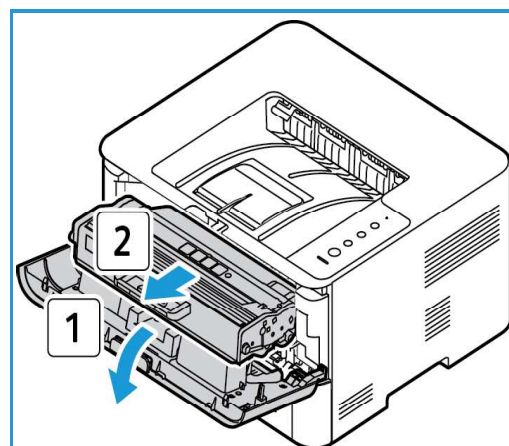
- Hold the toner cartridge by the handle and slowly insert the cartridge into the opening in the machine. Tabs on the sides of the cartridge and corresponding grooves within the machine will guide the cartridge into the correct position until it locks into place.
- Close the front cover. The Machine Status light will return to green, indicating the printer is ready. The Toner LED light should not be lit, indicating there is enough toner to print.



## Replacing the Drum Cartridge


When it is time for a new drum cartridge, the Machine Status light on the control panel blinks red. To replace the Drum Cartridge, follow the instructions provided below or with the consumable.

- Open the front cover.
- Pull the toner cartridge out and place it on a clean flat surface.



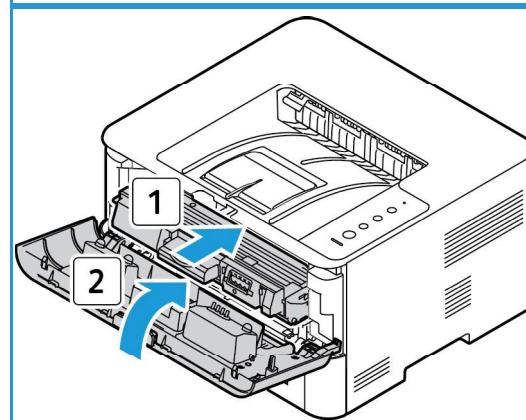
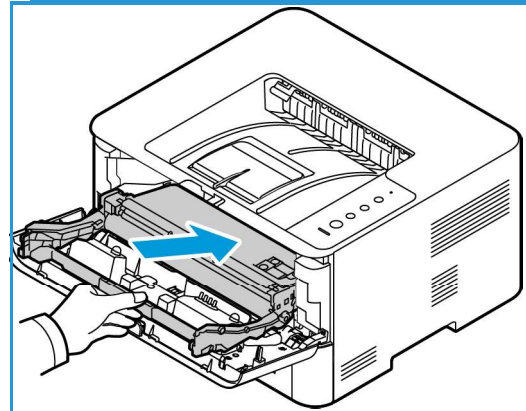
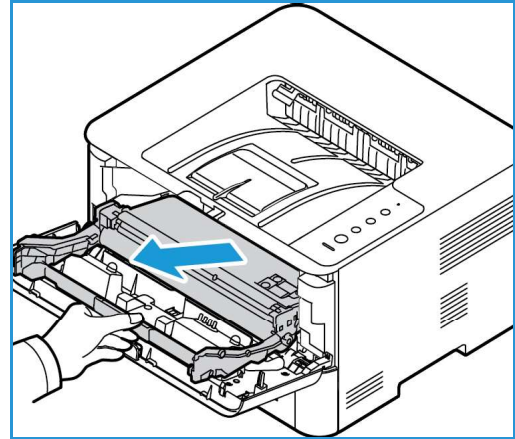
## General Care

3. Pull the drum cartridge out slowly by the handle.
4. Remove the new drum cartridge from the packaging. Use the handle on the cartridge to avoid touching sensitive parts that can be easily damaged.

 **CAUTION:** Do not touch the green underside of the drum cartridge. Use the handle on the cartridge to avoid touching this area.

5. Hold the new drum cartridge by the handle and insert it into the machine until it locks into place.

6. Re-install the toner cartridge.
7. Close the machine front cover. When the Machine Status light is solid green, the machine is ready.



## Recycling Consumables

For information on Xerox supplies recycling programs, go to [www.xerox.com/gwa](http://www.xerox.com/gwa).