

# General Care

## Redistributing Toner

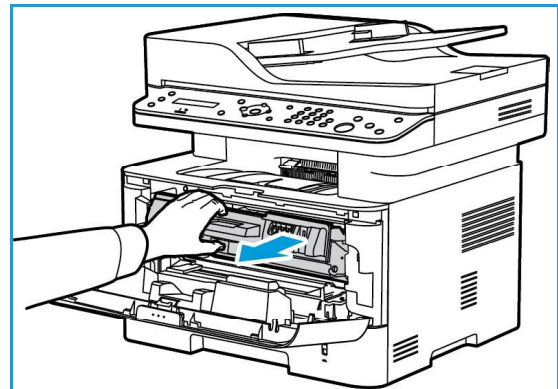
When the toner cartridge is near the end of its life:

- White streaks on prints or light printing occurs.
- The low toner status indicator appears if the Low Toner Alert feature was enabled in Maintenance options. An error message will also appear on the user interface.

If either condition occurs, you can temporarily improve print quality by redistributing the remaining toner in the cartridge. In some cases, white streaks or light printing will still occur even after you have redistributed the toner.

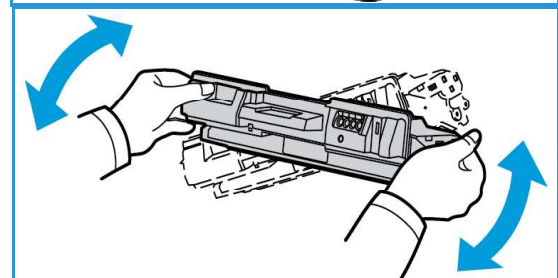
Follow these steps to redistribute the toner in your cartridge and temporarily improve print quality.

1. Open the front cover.
2. Pull the toner cartridge out.

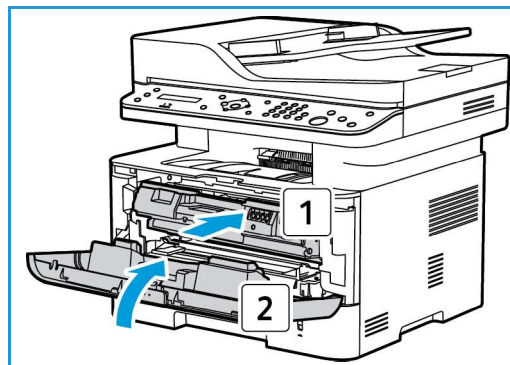


3. Slowly shake the cartridge five or six times to distribute the toner evenly inside the cartridge.

**Note:** If toner gets on your clothing, wipe it off with a dry cloth and wash clothing in cold water. Hot water sets toner into fabric.



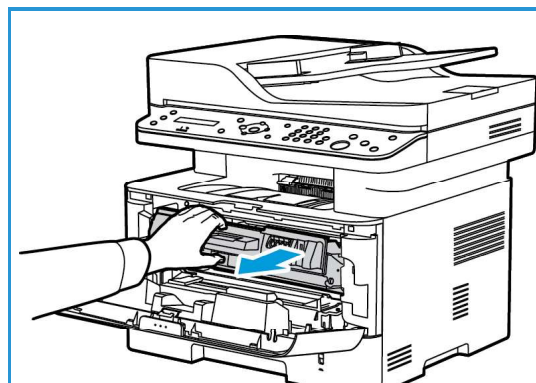
4. Re-install the toner cartridge by inserting it slowly into the machine.
5. Close the printer cover. When the Machine Status light on the control panel is solid green, the machine is ready.



## Replacing the Toner Cartridge

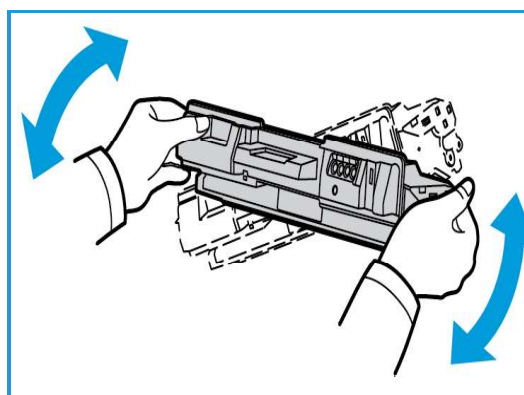
Replace the toner cartridge using the following instructions.

1. Open the front cover.
2. Pull out the toner cartridge.

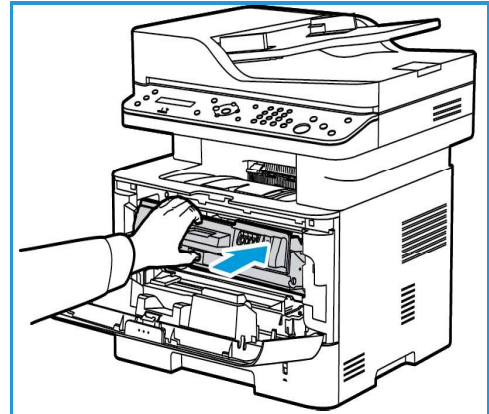


3. Remove the new toner cartridge from the packaging. Remove the protective materials from the cartridge as directed in the packaging labels.
4. Slowly shake the new cartridge five or six times to distribute the toner evenly inside the cartridge.

**Note:** If toner gets on your clothing, wipe it off with a dry cloth and wash clothing in cold water. Hot water sets toner into fabric.

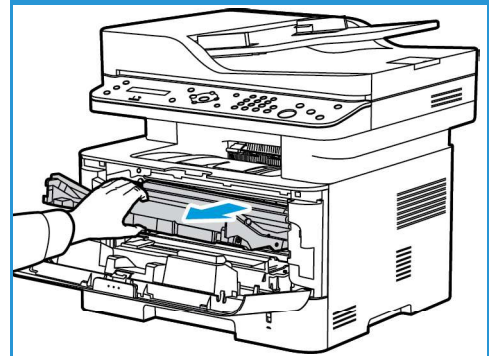
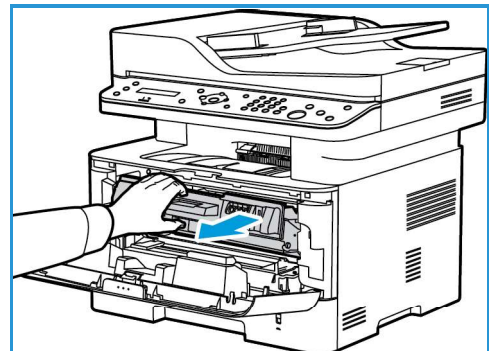


5. Hold the cartridge by the handle. Slowly insert the cartridge into the opening in the machine. Tabs on the sides of the cartridge and corresponding grooves within the machine will guide the cartridge into the correct position until it locks into place.
6. Close the front cover. Make sure that the door is securely closed. When the green machine status light is solid, the machine is ready.



## Replacing the Drum Cartridge

1. Open the front cover.
2. Pull the toner cartridge out and place it on a clean flat surface.
3. Pull the drum cartridge out slowly.
4. Remove the new drum cartridge from the packaging. Follow directions on the packaging to remove the tape and appropriate packaging pieces from the new cartridge. Use the handle on the cartridge to avoid touching sensitive parts that can be easily damaged.



### CAUTIONS:

- To prevent damage to the drum cartridge, do not expose it to light for more than a few minutes. Cover it with a piece of paper, if necessary.
- Do not touch the green surface on the underside of the cartridge. Use the handle on the cartridge to avoid touching this area.

5. Hold the drum cartridge by the handle and insert it into the machine until it locks into place.
6. Re-install the toner cartridge.
7. Close the machine front cover. When the green machine status light is solid, the machine is ready.

