

Replacing the Toner Cartridge

The machine displays a message when the amount remaining in the toner cartridge is low. Note that the print quality may suffer if you continue printing without resolving this issue. You can check the amount remaining in the toner cartridges on the display (▶ **Checking the Remaining Amount of Consumables(P. 436)**).

▶ **When a Message Appear(P. 431)**

▶ **When Printouts are Poor in Quality(P. 432)**

▶ **Procedure for Replacing the Toner Cartridge(P. 432)**

When a Message Appear

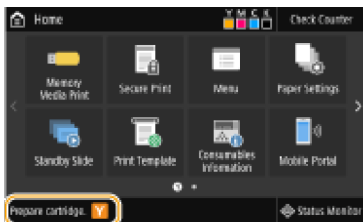
The message that is displayed depends on the amount remaining in the toner cartridges. Depending on which message is displayed, prepare a new toner cartridge (▶ **Consumables(P. 449)**) or replace the current toner cartridge with a new one (▶ **Procedure for Replacing the Toner Cartridge(P. 432)**).

NOTE

- Where "XXXX" appears in the descriptions below, the toner cartridge color black, yellow, magenta, or cyan appears in the actual messages.

<Prepare cartridge.>/<Prepare the XXXX cartridge.>

This message notifies you that a toner cartridge needs to be replaced soon. Make sure that you have a replacement toner cartridge ready. Replace the toner cartridge if you see this message before you start to print a large job.



NOTE

When this message is displayed

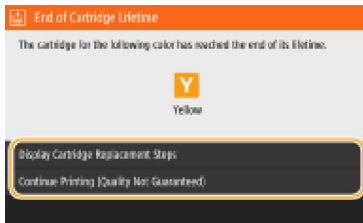
- When printing, you can continue printing the original.
- If this message is displayed for the black toner cartridge while an I-Fax document is being received, the machine does not perform printing so that unclear print is avoided. To continue printing even if the amount remaining in toner cartridge is running low, set <Continue Print. When Cart. Low> to <On>. ▶ **<Continue Print. When Cart. Low>(P. 399)**

Specify when this message is displayed

- You can set any value as the percentage of the amount remaining in the toner cartridge that triggers this message. ▶ **<Display Timing for Cart. Prep.>/<Displ. Timing for Cartridge Prep. Notif.>(P. 297)**

<End of Cartridge Lifetime>

This message, which appears with the toner cartridge color(s), notifies you that a toner cartridge has reached the end of its lifetime. It is recommended that you replace the cartridge with a new one. You can continue printing, but the print quality cannot be guaranteed.



<Display Cartridge Replacement Steps>/<Display Recovery Steps>

Displays the procedure for replacing a toner cartridge.

<Continue Printing (Quality Not Guaranteed)>/<Continue Printing (Qty. Not Guaranteed)>

You can continue printing, but the machine may malfunction.

When Printouts are Poor in Quality

If your printouts begin to show any of the following features, one of your toner cartridges is consumed. Replace the nearly empty toner cartridge even if no message is displayed. **Procedure for Replacing the Toner Cartridge(P. 432)**

Streaks Appear/Printing is Uneven



Partially faded



Uneven density



White Spots Appear



Toner smudges and splatters appear



Blank space of originals becomes grayish in printouts



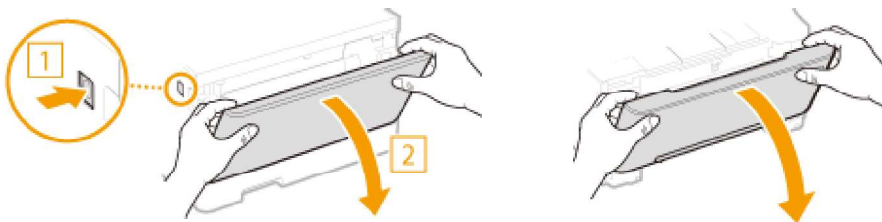
Procedure for Replacing the Toner Cartridge

When you replace the toner cartridge, simple instructions on the replacement procedure are displayed on the screen. See the on-screen instructions as well as the following procedure.

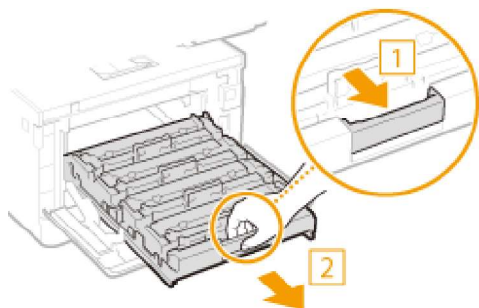
1 Open the front cover.

LBP654Cx / LBP653Cdw

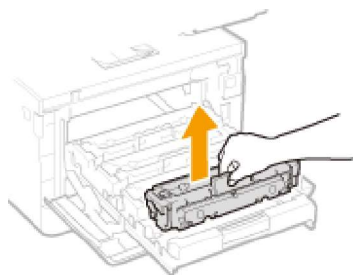
LBP613Cdw / LBP611Cn



2 Pull out the cartridge tray.

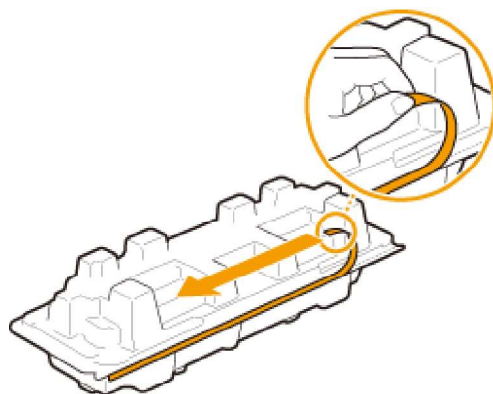


3 Pull the target toner cartridge straight up and out of the machine.

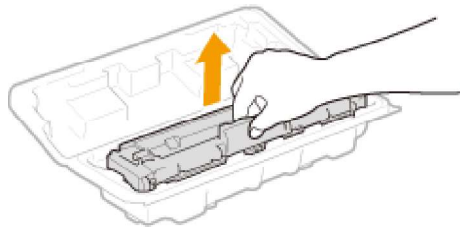


4 Remove the replacement toner cartridge from the packing material.

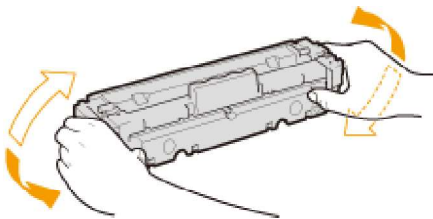
- 1** Pull the tab of the packing material on a flat place.



- 2** Pull out the toner cartridge.

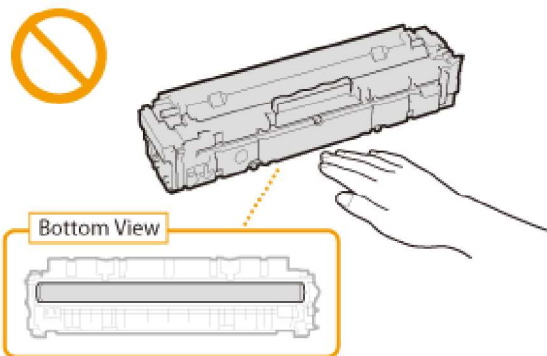


- 5** Shake the toner cartridge 5 or 6 times as shown below to evenly distribute the toner inside the cartridge.



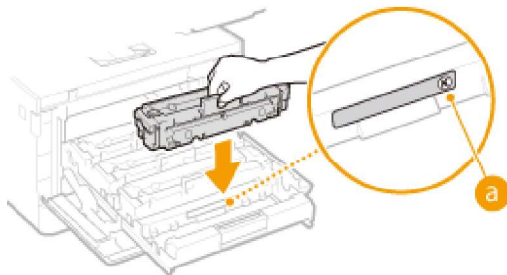
IMPORTANT:

- Do not touch the surface of the drum on the bottom of the toner cartridge.



- 6** Install the toner cartridge.

- Each toner cartridge color has its own slot in the toner cartridge tray, and this tray is indicated with a corresponding color label (a). Place the toner cartridge into the slot that corresponds to its color.



IMPORTANT:

- The bottom surface of the toner cartridge is exposed; therefore, be careful not to bump the toner cartridge against the slot frame when inserting it into the slot.

- 7** Push the toner cartridge tray back in, and close the front cover.