

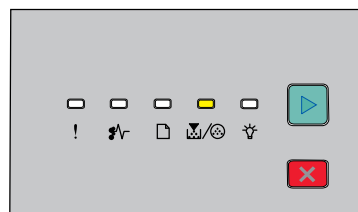


Replacing the photoconductor kit

The printer displays the **Photoconductor life warning** or **Replace photoconductor** light sequence when the photoconductor kit reaches the page maximum.

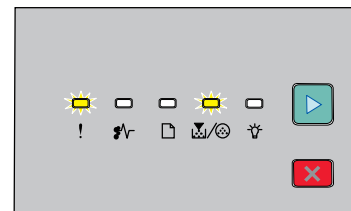
Light sequences

Photoconductor life warning



! - On

Replace photoconductor



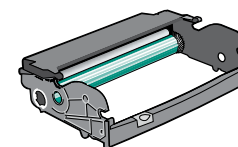
! - Blinking

! - Blinking

! - On

When any of the light sequences occur, order a new photoconductor kit. While the printer may continue to function properly after the photoconductor kit has reached its official end-of-life, print quality significantly decreases.

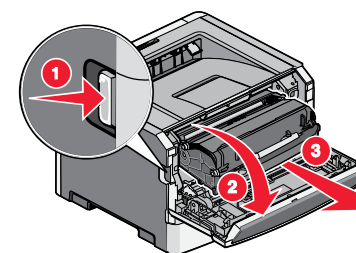
Note: The photoconductor kit is a single item.



To replace the photoconductor kit:

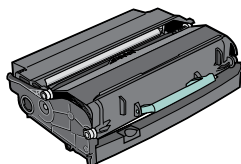
- 1 Turn off the printer.
- 2 Pull the photoconductor kit and toner cartridge together as a unit out of the printer by pulling on the toner cartridge handle.

Note: The photoconductor kit and toner cartridge form a unit.

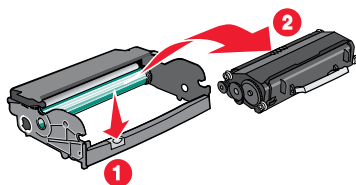




Place the unit on a flat, clean surface.

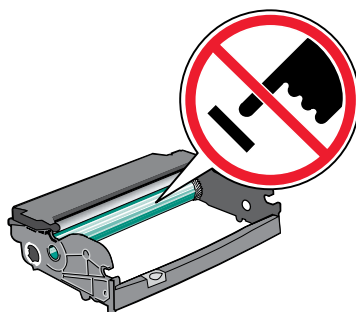


- 3 Press the button on the base of the photoconductor kit, and then pull the toner cartridge up and out using the handle.

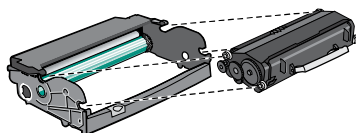


- 4 Unpack the new photoconductor kit.

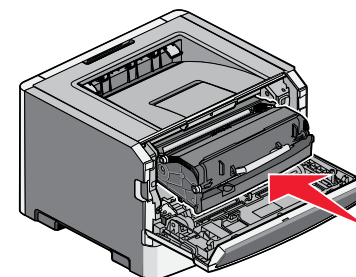
Warning—Potential Damage: Be careful not to touch the photoconductor drum. Doing so may affect the print quality of future print jobs.




- 5 Insert the toner cartridge into the photoconductor kit by aligning the rollers on the toner cartridge with the tracks. Push the toner cartridge in until it *clicks* into place.



- 6 Install the unit into the printer by aligning the arrows on the guides of the unit with the arrows in the printer. Push the unit fully in.



- 7 After replacing the photoconductor kit, reset the photoconductor counter:
Open the front door and then press and hold  until all the lights cycle.

Warning—Potential Damage: Resetting the photoconductor counter without replacing the photoconductor kit may damage your printer and void your warranty.

- 8 Close the front door.

