


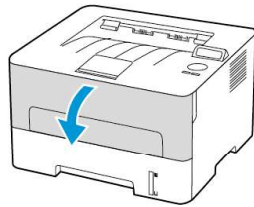


## Replacing Supplies

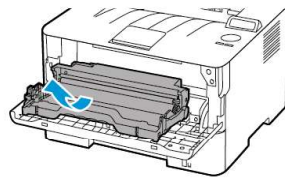
### Replacing the Toner Cartridge

1. Open the front door.

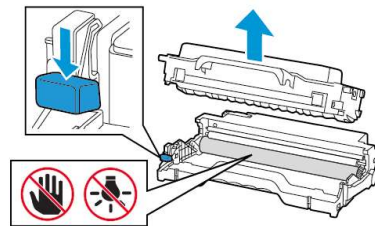
 **Warning:** To prevent damage from electrostatic discharge, touch any exposed metal frame of the printer before accessing or touching interior areas of the printer.



2. Remove the imaging unit.

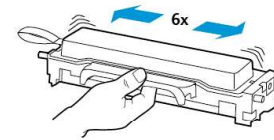


3. Remove the used toner cartridge from the imaging unit.

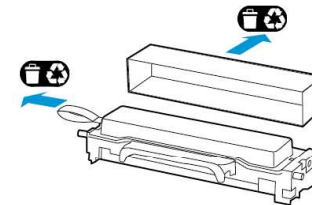


4. Unpack the new toner cartridge.

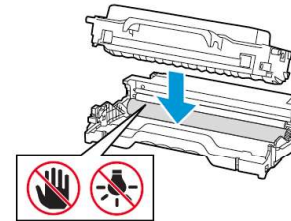
5. Shake the toner cartridge to redistribute the toner.



6. Remove the seal, and then remove the cover.

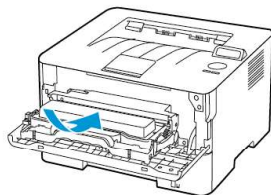


7. Insert the new toner cartridge into the imaging unit.





8. Insert the imaging unit.

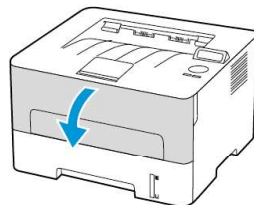


9. Close the door.

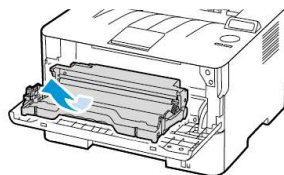
## Replacing the Imaging Unit

1. Open the front door.

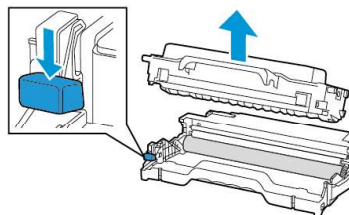
**Warning:** To prevent damage from electrostatic discharge, touch any exposed metal frame of the printer before accessing or touching interior areas of the printer.



2. Remove the used imaging unit.



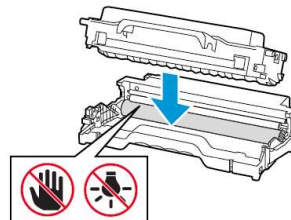
3. Remove the toner cartridge from the used imaging unit.



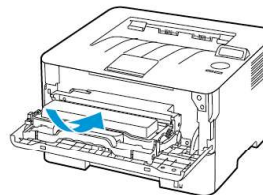
4. Unpack the new imaging unit, and then insert the toner cartridge.

**Warning:** Do not expose the imaging unit to direct light for more than 10 minutes. Extended exposure to light may cause print quality problems.

**Warning:** Do not touch the photoconductor drum. Doing so may affect the quality of future print jobs.



5. Insert the new imaging unit.



6. Close the door.





## Replacing Supplies

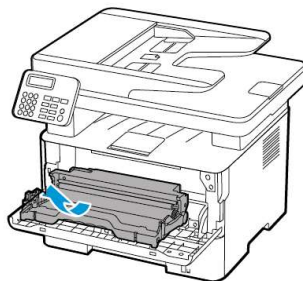
### Replacing the Toner Cartridge

1. Open the front door.

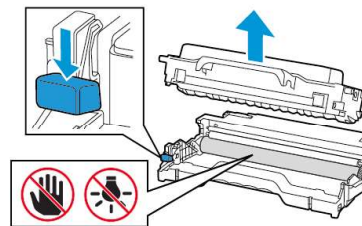
**Warning:** To prevent damage from electrostatic discharge, touch any exposed metal frame of the printer before accessing or touching interior areas of the printer.



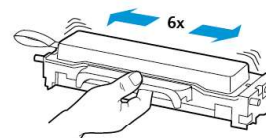
2. Remove the imaging unit.



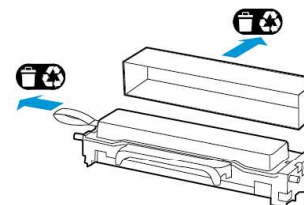
3. Remove the used toner cartridge from the imaging unit.



4. Unpack the new toner cartridge.
5. Shake the toner cartridge to redistribute the toner.

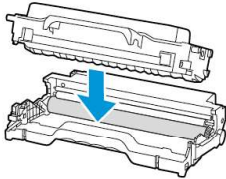


6. Remove the seal, and then remove the cover.

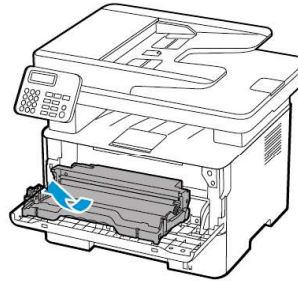




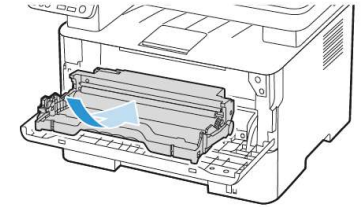
7. Insert the new toner cartridge into the imaging unit.



2. Remove the used imaging unit.

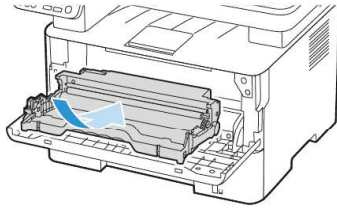


5. Insert the new imaging unit.

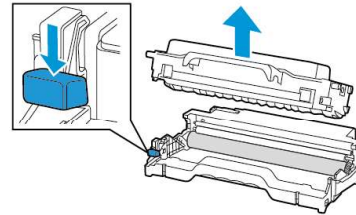


8. Insert the imaging unit.

6. Close the door.



3. Remove the toner cartridge from the used imaging unit.



9. Close the door.

## Replacing the imaging unit

1. Open the front door.

4. Unpack the new imaging unit, and then insert the toner cartridge.

**Warning:** To prevent damage from electrostatic discharge, touch any exposed metal frame of the printer before accessing or touching interior areas of the printer.

**Warning:** Do not expose the imaging unit to direct light for more than 10 minutes. Extended exposure to light may cause print quality problems.

**Warning:** Do not touch the photoconductor drum. Doing so may affect the quality of future print jobs.

