

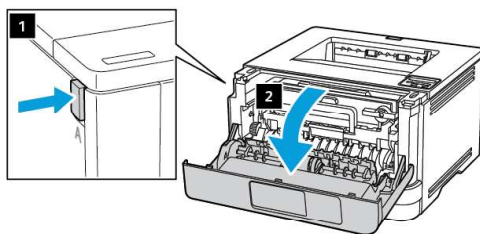


Replacing parts and supplies

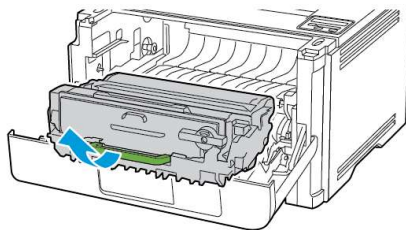
Replacing the Toner Cartridge

1. Open the front door.

Warning—Potential Damage: To prevent damage from electrostatic discharge, touch any exposed metal frame of the printer before accessing or touching interior areas of the printer.



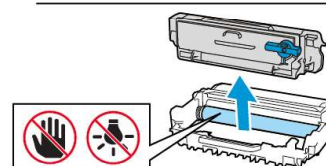
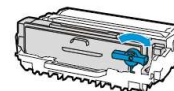
2. Remove the imaging unit.



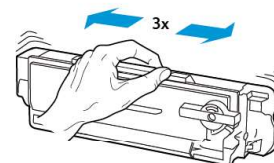
3. Twist the blue latch, and then remove the used toner cartridge from the imaging unit.

Warning—Potential Damage: Do not expose the imaging unit to direct light for more than 10 minutes. Extended exposure to light may cause print quality problems.

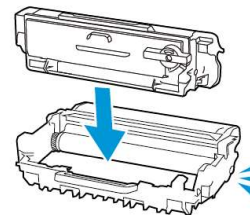
Warning—Potential Damage: Do not touch the photoconductor drum. Doing so may affect the quality of future print jobs.



4. Unpack the new toner cartridge.
5. Shake the toner cartridge to redistribute the toner.

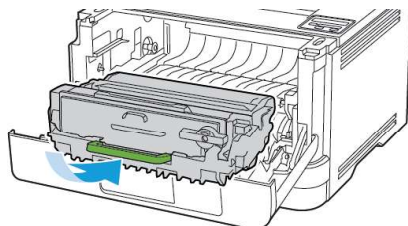


6. Insert the new toner cartridge into the imaging unit until it clicks into place.





7. Insert the imaging unit.

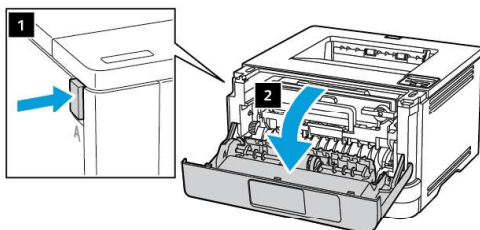


8. Close the door.

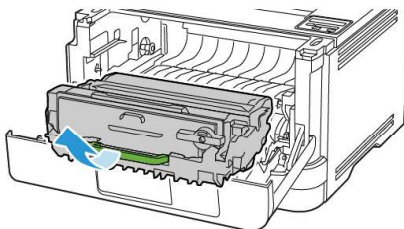
Replacing the imaging unit

1. Open the front door.

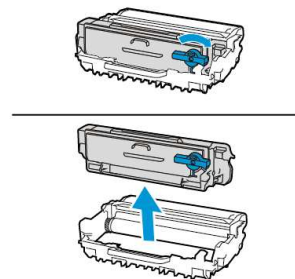
Warning: To prevent damage from electrostatic discharge, touch any exposed metal frame of the printer before accessing or touching interior areas of the printer.



2. Remove the used imaging unit.



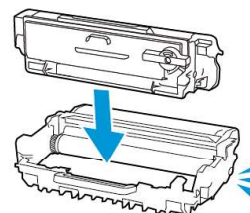
3. Twist the blue latch, and then remove the toner cartridge from the used imaging unit.



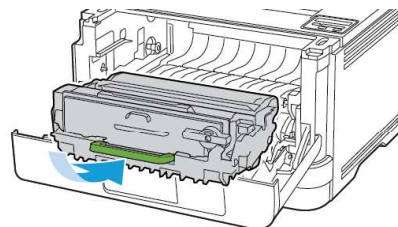
4. Unpack the new imaging unit, and then insert the toner cartridge until it *clicks* into place.

Warning: Do not expose the imaging unit to direct light for more than 10 minutes. Extended exposure to light may cause print quality problems.

Warning: Do not touch the photoconductor drum. Doing so may affect the quality of future print jobs.



5. Insert the new imaging unit.



6. Close the door.



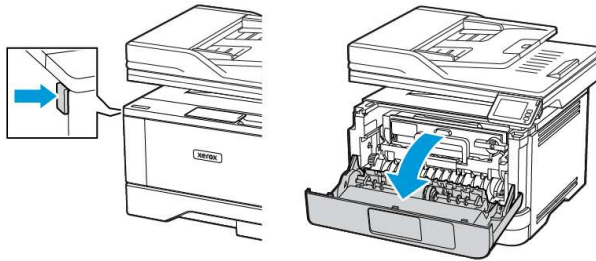


Replacing parts and supplies

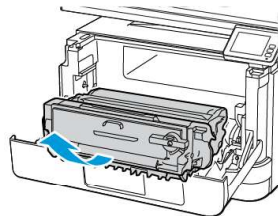
REPLACING THE TONER CARTRIDGE

1. Open the front door.

Warning: To prevent damage from electrostatic discharge, touch any exposed metal frame of the printer before accessing or touching interior areas of the printer.



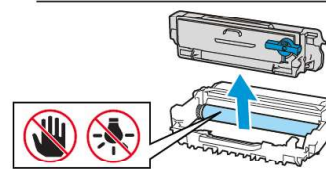
2. Remove the imaging unit.



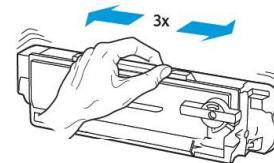
3. Twist the blue latch, and then remove the used toner cartridge from the imaging unit.

Warning: Do not expose the imaging unit to direct light for more than 10 minutes. Extended exposure to light may cause print quality problems.

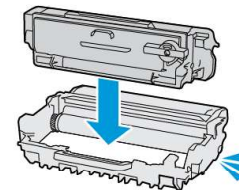
Warning: Do not touch the photoconductor drum. Doing so may affect the quality of future print jobs.



4. Unpack the new toner cartridge.
5. Shake the toner cartridge to redistribute the toner.

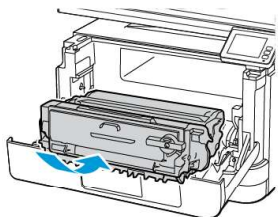


6. Insert the new toner cartridge into the imaging unit until it clicks into place.





7. Insert the imaging unit.

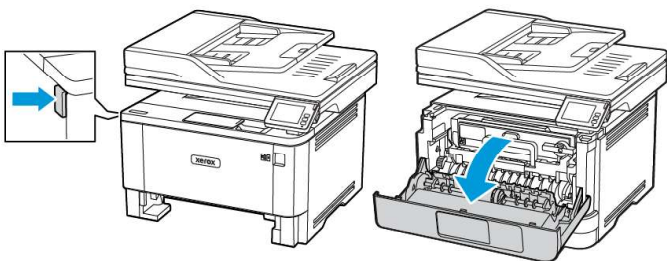


8. Close the door.

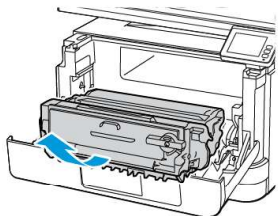
REPLACING THE IMAGING UNIT

1. Open the front door.

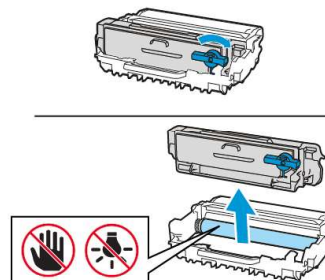
Warning: To prevent damage from electrostatic discharge, touch any exposed metal frame of the printer before accessing or touching interior areas of the printer.



2. Remove the used imaging unit.



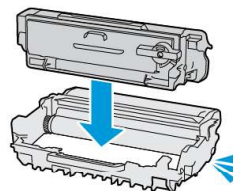
3. Twist the blue latch, and then remove the toner cartridge from the used imaging unit.



4. Unpack the new imaging unit, and then insert the toner cartridge until it clicks into place.

Warning: Do not expose the imaging unit to direct light for more than 10 minutes. Extended exposure to light may cause print quality problems.

Warning: Do not touch the photoconductor drum. Doing so may affect the quality of future print jobs.



5. Insert the new imaging unit.

