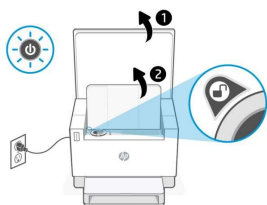


When the toner levels show low on the toner level indicator, follow these steps to refill the toner.

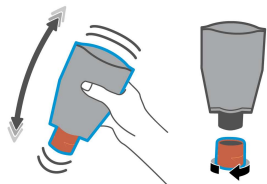
1. Make sure the printer is powered on, and then open the toner access door.

**NOTE:**

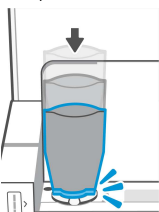
The port indicator will only display the Unlock icon if a toner refill is possible.



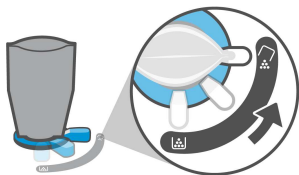
2. Shake the toner pack for a few seconds and remove the cap.



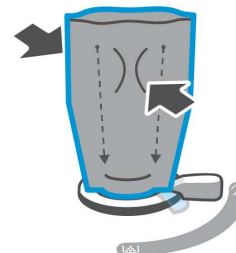
3. Open the toner access door, and then insert the toner pack until it clicks into place. Ensure that the toner pack is fully inserted into the port.



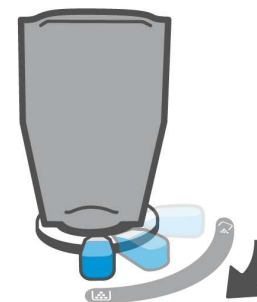
4. Rotate the refill lock ring counterclockwise until it stops.



5. Gently squeeze the toner pack to empty it into the tank.



6. Turn the lock ring lever clockwise back to its original position.



7. Remove the toner pack from the port and close the toner access door.

**NOTE:**

After emptying the toner pack, the printer might take a few minutes to be ready for use.

