

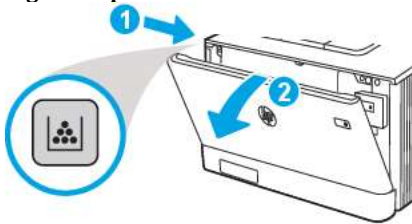


Remove and replace the toner cartridges

Follow these steps to replace the toner cartridge.

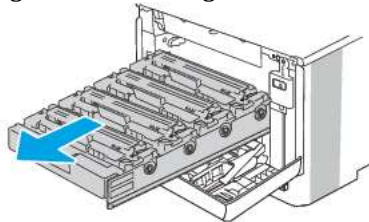
1. Open the front door by pressing the button on the left panel.

Figure : Open front door



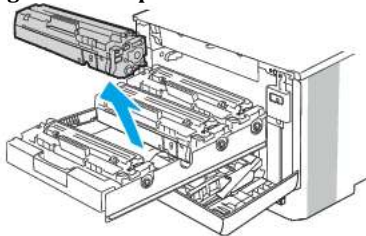
2. Grasp the blue handle on the toner cartridge drawer, and then pull out the drawer.

Figure : Pull cartridge drawer out



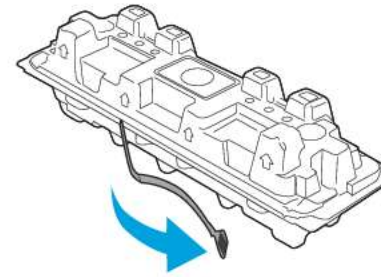
3. Grasp the handle on the toner cartridge, and then pull the toner cartridge straight up to remove it.

Figure : Pull up to remove the cartridge



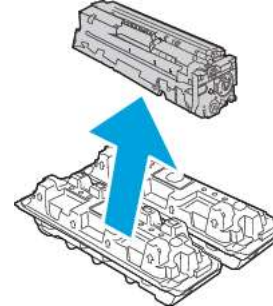
4. Remove the new toner cartridge package from the box, and then pull the release tab on the packaging.

Figure : Pull release tab on cartridge packaging



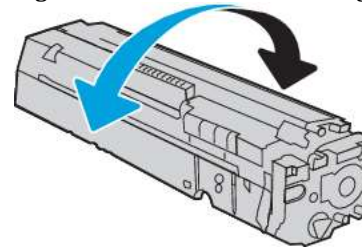
5. Remove the toner cartridge from the opened packaging shell. Place the used toner cartridge in the shell for recycling.

Figure : Remove cartridge from opened packaging



6. Hold both ends of the toner cartridge and rock it 5-6 times.

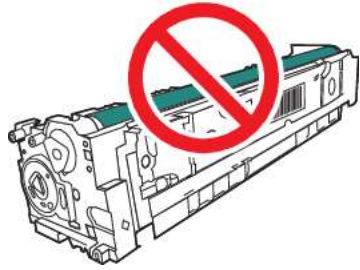
Figure : Shake the toner cartridge



7. Do not touch the imaging drum on the bottom of the toner cartridge. Fingerprints on the imaging drum can cause print-quality problems. Also, do not expose the cartridge to light unnecessarily.

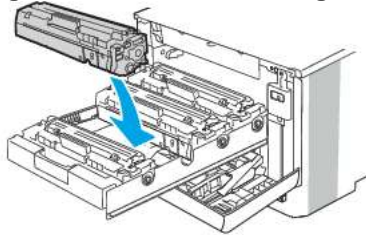
Figure : Avoid touching drum





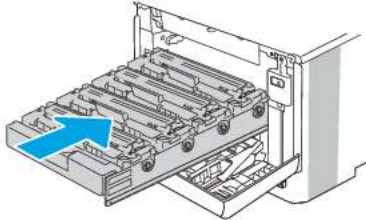
8. Insert the new toner cartridge into the drawer. Make sure that the color chip on the cartridge matches the color chip on the drawer.

Figure : Insert the new cartridge



9. Close the toner cartridge drawer.

Figure : Push the cartridge drawer in



10. Close the front door.

Figure : Close the front door

